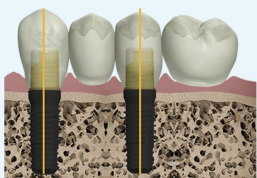


# TWO IMPLANTS

## PARALLEL IMPLANTS

### Elos Accurate® Hybrid Base H™

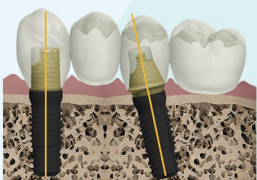
When the implants are installed parallel to each other, the strongest cementation is obtained with our H variant on both implants.



## ANGLED IMPLANTS

### Combination of hybrid bases for best result

For a combination of straight and angled\* implants, the strongest cementation is obtained with the combination of the two non-engaging hybrid bases.



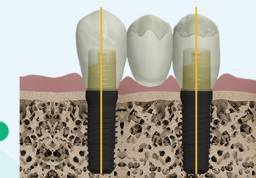
**WITH  
cantilever**

**WITHOUT  
cantilever**

## PARALLEL IMPLANTS

### Elos Accurate® Hybrid Base H™

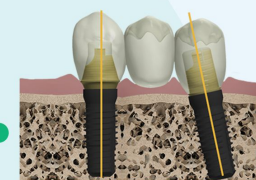
When the implants are installed parallel to each other, the strongest cementation is obtained with our H variant on both implants.



## ANGLED IMPLANTS

### Combination of hybrid bases for best result

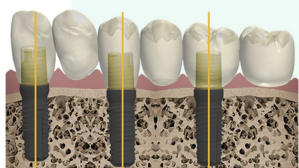
For a combination of straight and angled\* implants, the strongest cementation is obtained with the combination of the two non-engaging hybrid bases.



## PARALLEL IMPLANTS

### Elos Accurate® Hybrid Base H™

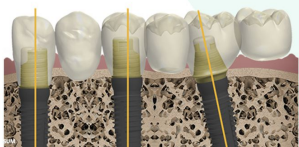
When the implants are installed parallel to each other, the strongest cementation is obtained with our H variant on all implants.



## ANGLED IMPLANTS

### Combination of hybrid bases for best result

For a combination of straight and angled\* implants, both types of hybrid bases could be used.



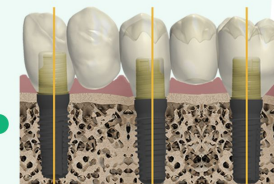
**WITH  
cantilever**

**WITHOUT  
cantilever**

## PARALLEL IMPLANTS

### Elos Accurate® Hybrid Base H™

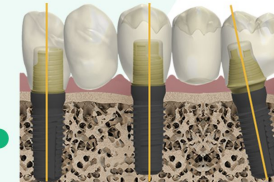
When the implants are installed parallel to each other, the strongest cementation is obtained with our H variant on all implants.



## ANGLED IMPLANTS

### Combination of hybrid bases for best result

For a combination of straight and angled\* implants, both types of hybrid bases could be used.



# THREE IMPLANTS OR MORE